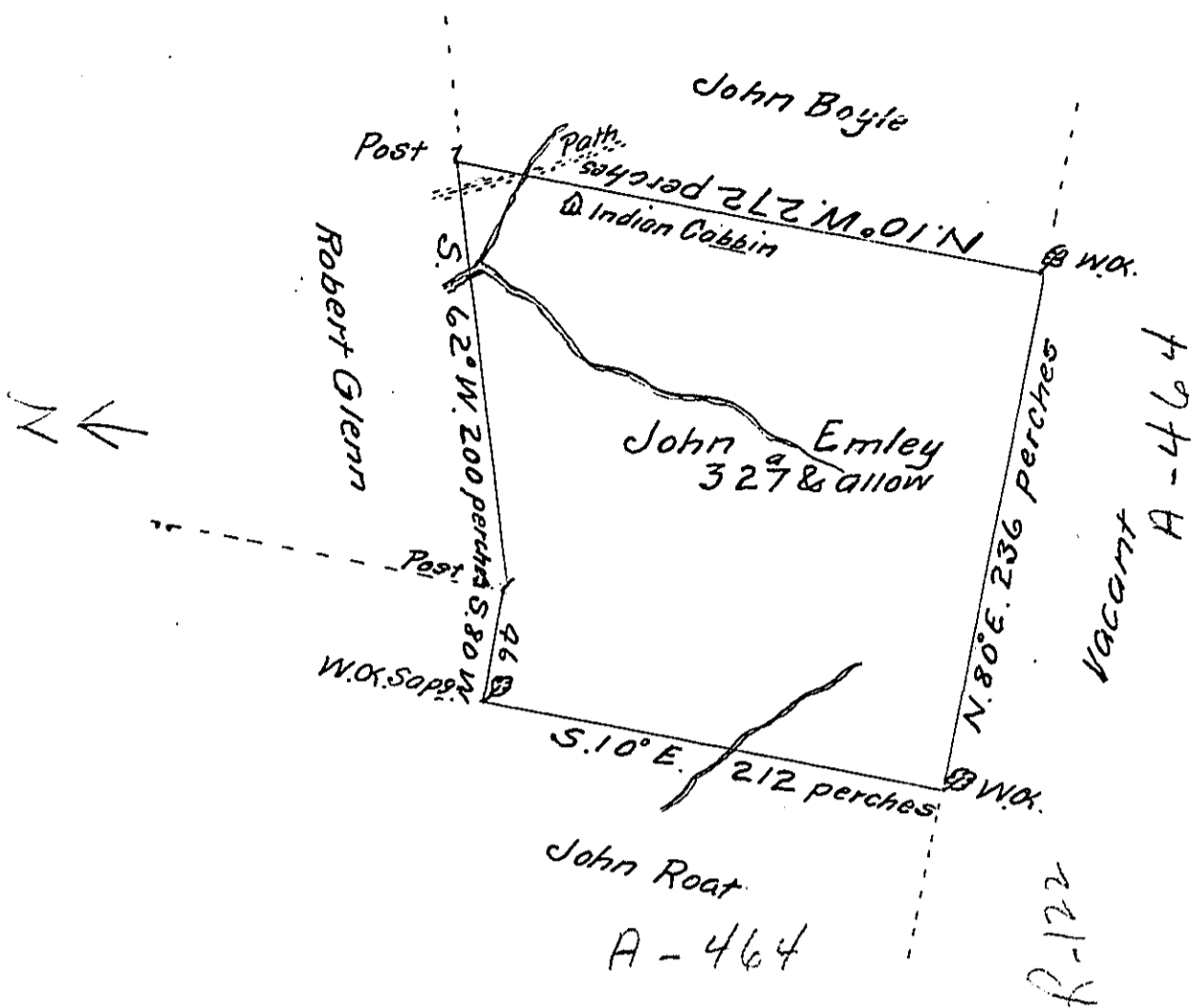


Sug. Loaf -  
Luzerne.



A Draught of a tract of Land called Vennisson Market situate on and joining the Indian Path leading from Nesopect to Fort Allen and on the waters of Nesopect Creek in the County of Northumberland including an Indian Cabin on the aforesaid Path and containing Three hundred & twenty seven acres besides the usual allowance of 6 p cent for Roads & ta.

Surveyed the 06<sup>th</sup> day of November 1773 for John Emley in pursuance of a warrant dated the 25<sup>th</sup> day of March 1773.

by Chas Stewart D<sup>y</sup> Sur<sup>r</sup>

To John Lukens Esq<sup>r</sup> Survey<sup>r</sup> Gen<sup>l</sup>

IN TESTIMONY that the above is a copy of the original remaining on file in the Department of Internal Affairs of Pennsylvania, made conformably to an Act of Assembly approved the 16th day of February, 1833, I have hereunto set my Hand and caused the Seal of said Department to be affixed at Harrisburg, this Seventh day of December 1911

*Henry Houch*  
Secretary of Internal Affairs.